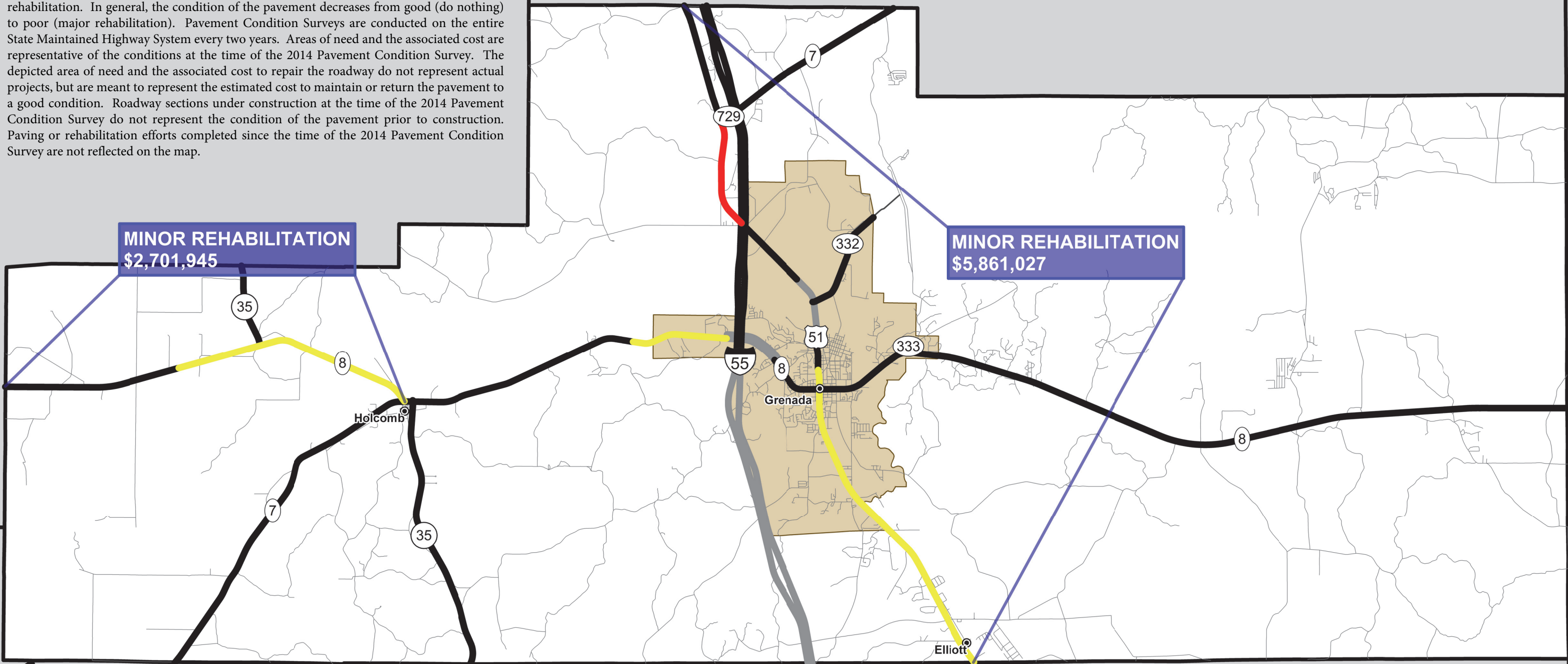


The depicted conditions and identified pavement needs represent the pavement condition of the State Maintained Highway System at the time of the 2014 Pavement Condition Survey. Weather conditions may cause rapid deterioration of some pavement sections. Segments of roadway are broken into analysis sections based on the existing pavement structure. The condition of each analysis section is represented by color based on the following four categories: do nothing, preventative maintenance, minor rehabilitation, and major rehabilitation. In general, the condition of the pavement decreases from good (do nothing) to poor (major rehabilitation). Pavement Condition Surveys are conducted on the entire State Maintained Highway System every two years. Areas of need and the associated cost are representative of the conditions at the time of the 2014 Pavement Condition Survey. The depicted area of need and the associated cost to repair the roadway do not represent actual projects, but are meant to represent the estimated cost to maintain or return the pavement to a good condition. Roadway sections under construction at the time of the 2014 Pavement Condition Survey do not represent the condition of the pavement prior to construction. Paving or rehabilitation efforts completed since the time of the 2014 Pavement Condition Survey are not reflected on the map.



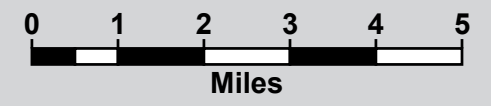
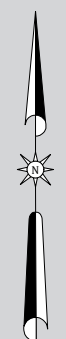
**MINOR REHABILITATION**  
\$2,701,945

**MINOR REHABILITATION**  
\$5,861,027

**GRENADA COUNTY**

**REQUIRED MAINTENANCE ACTIVITY**

- MAJOR REHABILITATION
- MINOR REHABILITATION
- PREVENTIVE MAINTENANCE
- DO NOTHING



MDOT PLANNING DIVISION  
2015